



12 Henrietta Court, Marlborough Road

, Swindon, SN3 1QJ

Offers Over £125,000



2



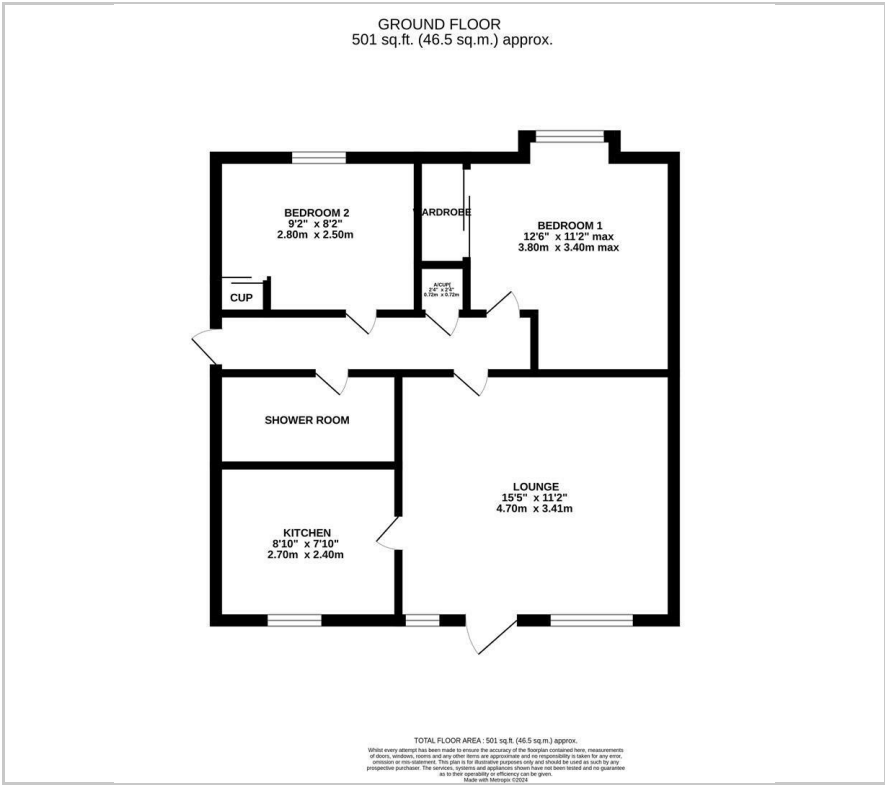
1



1



Floor Plan



- GROUND FLOOR
- TWO DOUBLE BEDROOMS
- KITCHEN
- BATHROOM WITH WALK-IN SHOWER
- COMMUNAL GARDENS
- PARKING

NO ONWARD CHAIN A spacious two bedroom GROUND FLOOR apartment situated in the popular retirement complex of Henrietta Court. This apartment is situated in a block of just four apartments sharing their own entrance. The accommodation offers two double bedrooms, a bathroom with walk-in shower, a kitchen and a good size lounge with French doors opening onto the garden. Some updating/redecorating would be beneficial.

Henrietta Court is a small sought after development for the over 55's within short walking distance to the centre of Old Town, supermarkets, doctors, dentists, library and leisure complex. There are attractive gardens surrounding the property and parking available for owners and visitors.

Service charge - £185.36 per month
Ground Rent - £37.50 per quarter
Lease - 64 years remaining

Viewing

Please contact our Chappells Estate Agents Sales Office on 01793 618080 if you wish to arrange a viewing appointment for this property or require further information.

These particulars, whilst believed to be accurate are set out as a general outline only for guidance and do not constitute any part of an offer or contract. Intending purchasers should not rely on them as statements of representation of fact, but must satisfy themselves by inspection or otherwise as to their accuracy. No person in this firm's employment has the authority to make or give any representation or warranty in respect of the property.

35-36 Newport Street, Swindon, Wiltshire, SN1 3DR

01793 618080

sales@chappells.uk.com www.chappells.uk.com



Area Map



Energy Efficiency Graph

